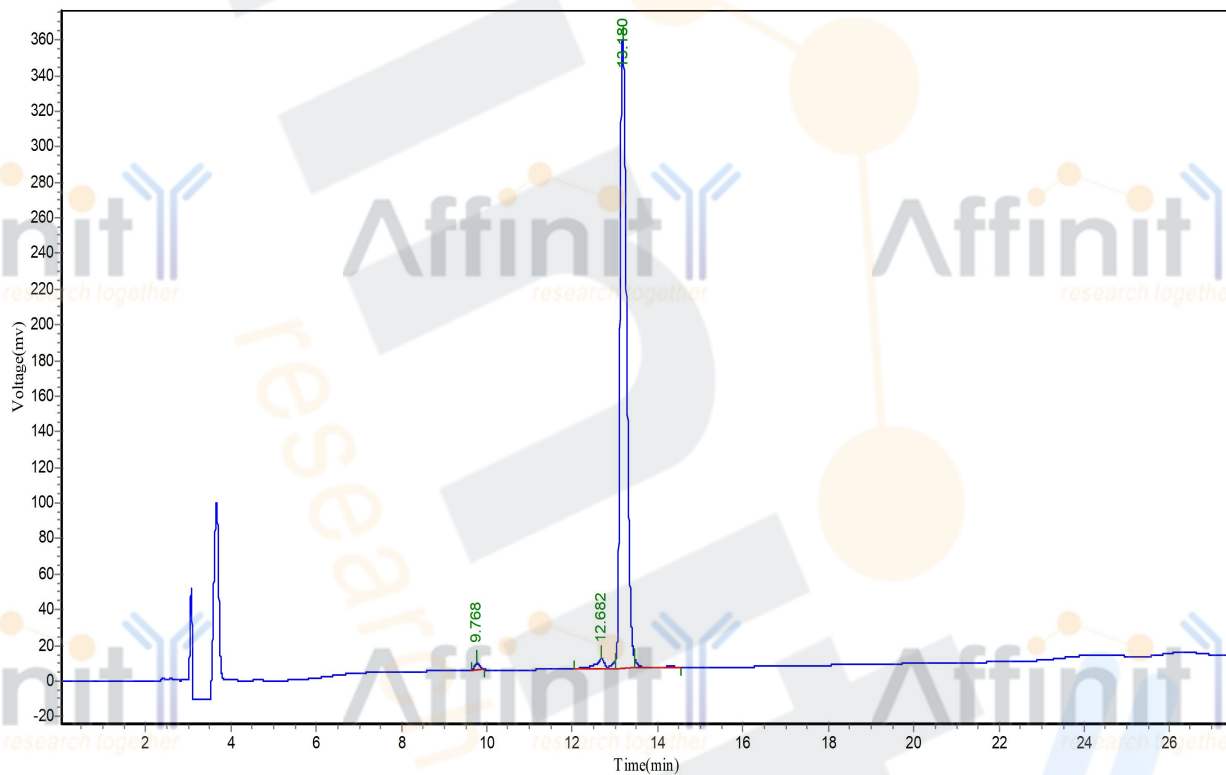


HPLC REPORT

Sample: M-16 Analyzed date: 2016-12-23
 Analyst: LLR
 Lot. No.: P161215-LL627112
 Column: Kromasil C18, 4.6*250mm, 5µm
 Solvent A: A: 0.1% Trifluoroacetic Acid in 100% Acetonitrile
 Solvent B: B: 0.1% Trifluoroacetic Acid in 100% Water
 Gradient:

| | A | B |
|---------|------|-----|
| 0.0min | 20% | 80% |
| 25.0min | 45% | 55% |
| 25.1min | 100% | 0% |
| 30.0min | Stop | |

Volume: 20µl
 Wavelength: 220nm
 Flow rate: 1.0ml/min



| Rank | Time | Area | Conc. |
|-------|--------|-------------|---------|
| 1 | 9.768 | 28640.199 | 0.7227 |
| 2 | 12.682 | 105466.891 | 2.6611 |
| 3 | 13.180 | 3783313.250 | 95.4607 |
| 4 | 13.180 | 45795.672 | 1.1555 |
| Total | | 3963216.012 | 100 |