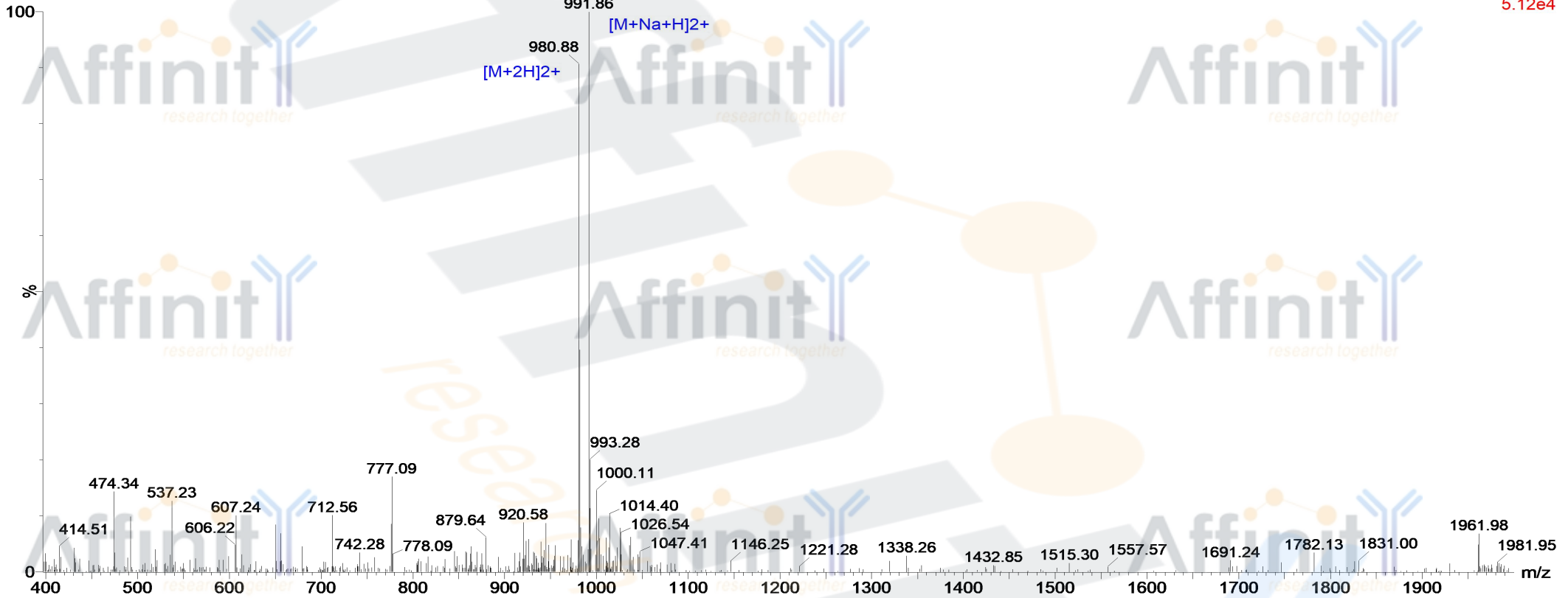


MASS SPECTROMETRY REPORT

02-Jan-2018
10:52:19

Probe: ESI
Cone: 50v
Desovation Temp :350
Capillary:3.00KV
Extractor: 5v
Gas Flow : 350
Scan ES+
5.12e4

180102-10 169 (3.124) Cm (169:183)



Sample Description

Analyzed date: 2016-01-02
Analyst: YU
Sample: M-16
M.W.: 1960.14
Lot. No.: P161221-CJ627112

Instrument

Waters ZQ2000
Probe: ESI
Nebulizer Gas Flow: 1.5L/min
CDL: -20.0v
CDL Temp.: 250 °C
Block Temp.: 200 °C

Waters ZQ2000

Probe Bias: + 4.5kv
Detector: 1.5kv
T. Flow: 0.2ml/min
B. Conc.: 50% H₂O/50% ACN