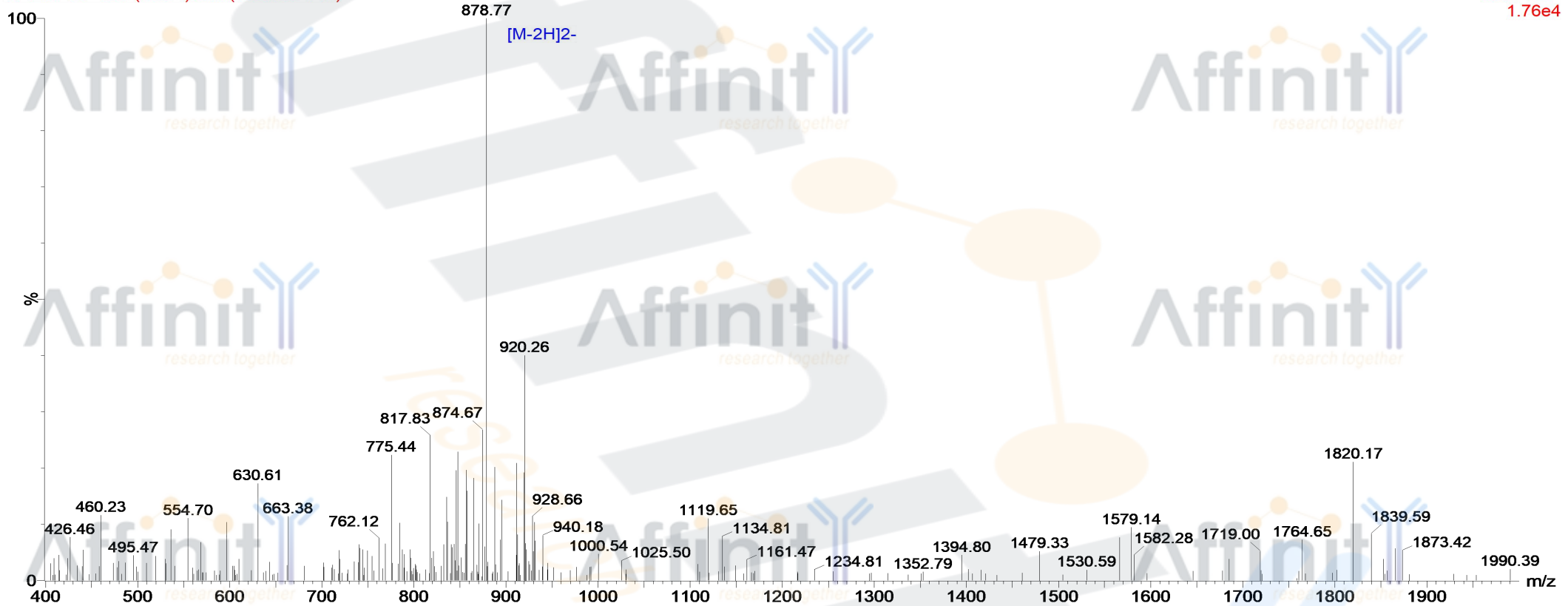


MASS SPECTROMETRY REPORT

29-Dec-2017
10:40:28

Probe: ESI
Cone: 50v
Desovation Temp :350
Capillary:3.00KV
Extractor: 5v
Gas Flow : 350
Scan ES-
1.76e4

171229-25- 138 (2.551) Cm (133:138-141)



Sample Description

Analyzed date: 2016-12-29
Analyst: YU
Sample: I-16
M.W.: 1759.83
Lot. No.: P161221-CJ627101

Instrument

Waters ZQ2000
Probe: ESI
Nebulizer Gas Flow: 1.5L/min
CDL: -20.0v
CDL Temp.: 250 °C
Block Temp.: 200 °C

Probe Bias: + 4.5kv
Detector: 1.5kv
T. Flow: 0.2ml/min
B. Conc.: 50%H2O/50% ACN