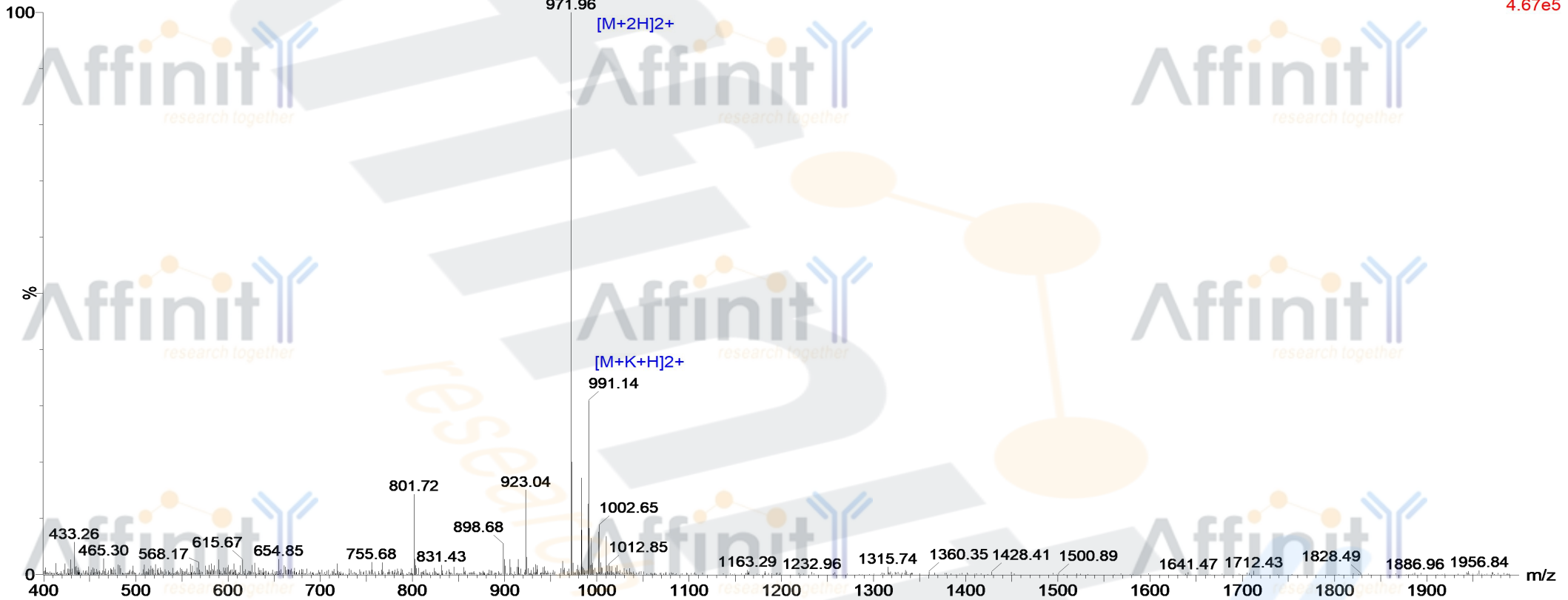


# MASS SPECTROMETRY REPORT

28-Dec-2017  
14:33:37

Probe: ESI  
Cone: 50v  
Desovation Temp :350  
Capillary:3.00KV  
Extractor: 5v  
Gas Flow : 350  
Scan ES+  
4.67e5

171228-40 704 (13.012) Cm (701:707)



Sample Description

Analyzed date: 2016-12-28  
Analyst: YU  
Sample: R-16  
M.W.: 1942.06  
Lot. No.: P161225-WD627153

Instrument

Waters ZQ2000  
Probe: ESI  
Nebulizer Gas Flow: 1.5L/min  
CDL: -20.0v  
CDL Temp.: 250 °C  
Block Temp.: 200 °C

Waters ZQ2000

Probe Bias: + 4.5kv  
Detector: 1.5kv  
T. Flow: 0.2ml/min  
B. Conc.: 50% H2O/50% ACN