



## TRAAK Polyclonal Antibody

Cat #: ABP52633

Size: 30µl /100µl /200µl

### Product Information

	<b>Product Name:</b> TRAAK Polyclonal Antibody		
	<b>Applications:</b> WB, ELISA		<b>Isotype:</b> Rabbit IgG
	<b>Reactivity:</b> Human, Mouse		
<b>REF</b>	<b>Catalog Number:</b> ABP52633	<b>LOT</b>	<b>Lot Number:</b> Refer to product label
	<b>Formulation:</b> Liquid		<b>Concentration:</b> 1 mg/ml
	<b>Storage:</b> Store at -20°C. Avoid repeated freeze / thaw cycles.		<b>Note:</b> Contain sodium azide.

**Background:** KCNK4 encodes a member of the TWIK-related arachidonic acid-stimulated two pore potassium channel subfamily. The potassium channel subfamily K member 4 homodimerizes and functions as an outwardly rectifying channel. This channel is regulated by polyunsaturated fatty acids, temperature and mechanical deformation of the lipid membrane. Potassium channel subfamily K member 4 is expressed primarily in neural tissues and may be involved in regulating the noxious input threshold in dorsal root ganglia neurons. Alternate splicing results in multiple transcript variants. Naturally occurring read-through transcripts also exist between this gene and the downstream testis expressed 40 (TEX40) gene, as represented in GeneID: 106780802.

**Application Notes:** Optimal working dilutions should be determined experimentally by the investigator. Suggested starting dilutions are as follows: WB (1:500-1:2000), ELISA (1:40000). Not yet tested in other applications.

**Storage Buffer:** PBS containing 50% Glycerol, 0.5% BSA and 0.02% Sodium Azide.

**Storage Instructions:** Stable for one year at -20°C from date of shipment. For maximum recovery of product, centrifuge the original vial after thawing and prior to removing the cap. Aliquot to avoid repeated freezing and thawing.

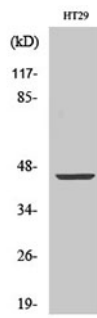


Fig. Western Blot analysis of various cells using TRAAK Polyclonal Antibody. Secondary antibody (catalog#: A21020) was diluted at 1:20000.

**Note:** The product listed herein is for research use only and is not intended for use in human or clinical diagnosis. Suggested applications of our products are not recommendations to use our products in violation of any patent or as a license. We cannot be responsible for patent infringements or other violations that may occur with the use of this product.