



Cortactin (Acetyl Lys235) Polyclonal Antibody

Cat #: ABP50133

Size: 30µl /100µl /200µl

Product Information

	Product Name: Cortactin (Acetyl Lys235) Polyclonal Antibody		
	Applications: WB, ELISA		Isotype: Rabbit IgG
	Reactivity: Human, Mouse, Rat		
REF	Catalog Number: ABP50133	LOT	Lot Number: Refer to product label
	Formulation: Liquid		Concentration: 1 mg/ml
	Storage: Store at -20°C. Avoid repeated freeze / thaw cycles.		Note: Contain sodium azide.

Background: CTTN is overexpressed in breast cancer and squamous cell carcinomas of the head and neck. Cortactin is localized in the cytoplasm and in areas of the cell-substratum contacts. This gene has two roles: (1) regulating the interactions between components of adherens-type junctions and (2) organizing the cytoskeleton and cell adhesion structures of epithelia and carcinoma cells. During apoptosis, cortactin is degraded in a caspase-dependent manner. The aberrant regulation of CTTN contributes to tumor cell invasion and metastasis. Three splice variants that encode different isoforms have been identified for CTTN.

Application Notes: Optimal working dilutions should be determined experimentally by the investigator. Suggested starting dilutions are as follows: WB (1:500-1:2000), ELISA (1:10000). Not yet tested in other applications.

Storage Buffer: PBS containing 50% Glycerol, 0.5% BSA and 0.02% Sodium Azide.

Storage Instructions: Stable for one year at -20°C from date of shipment. For maximum recovery of product, centrifuge the original vial after thawing and prior to removing the cap. Aliquot to avoid repeated freezing and thawing.

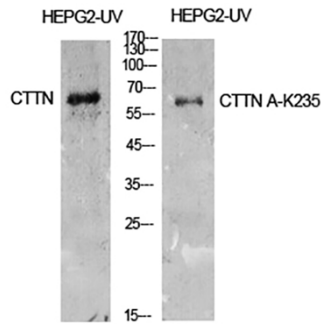


Fig.1. Western Blot analysis of HepG2-UV cells using Acetyl-Cortactin (K235) Polyclonal Antibody. Antibody was diluted at 1:500. Secondary Antibody was diluted at 1:20000.

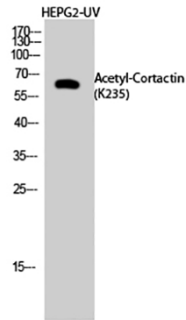


Fig.2. Western Blot analysis of HEPG2-UV cells using Acetyl-Cortactin (K235) Polyclonal Antibody diluted at 1:500. Secondary Antibody was diluted at 1:20000.

Note: The product listed herein is for research use only and is not intended for use in human or clinical diagnosis. Suggested applications of our products are not recommendations to use our products in violation of any patent or as a license. We cannot be responsible for patent infringements or other violations that may occur with the use of this product.